

Connect a CEM40 mount to a Computer

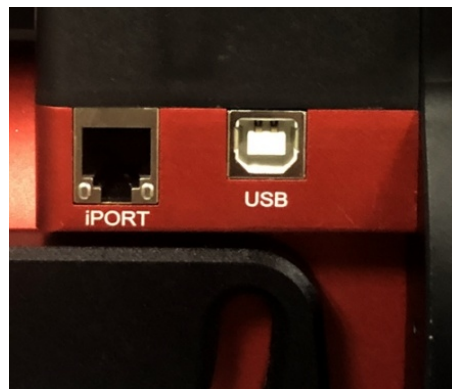
There are 2 ways to connect a CEM40 mount to a computer: USB and Wi-Fi (via optional iStarFi).

Connect to a Windows computer is via ASCOM Platform (please refer to <http://www.ascom-standards.org> for detailed info.) The software/firmware needed:

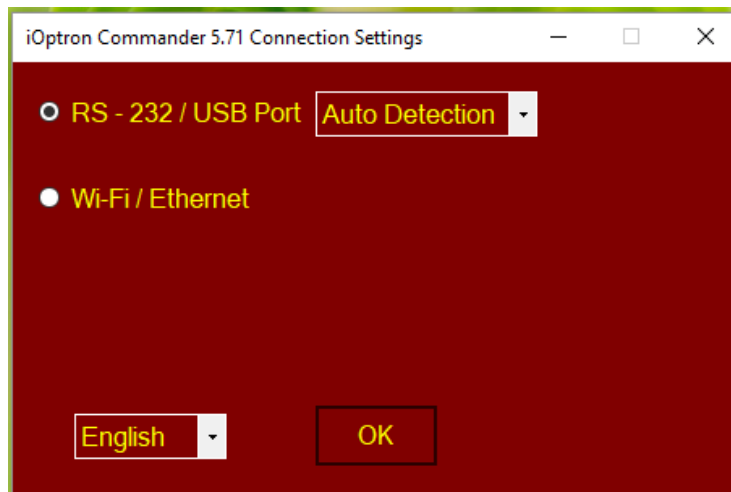
- Windows XP/ Vista/ 7 /8 /8.1 /10 with .NET (dotNET) Framework 4.8 installed;
- Latest ASCOM Platform. Download and install it from <http://www.ascom-standards.org>;
- iOptron Commander and ASCOM Driver Installer 5.7 or later. Download and install it from iOptron CEM40 product page;
- Latest mount firmware

1.1. Connect via USB

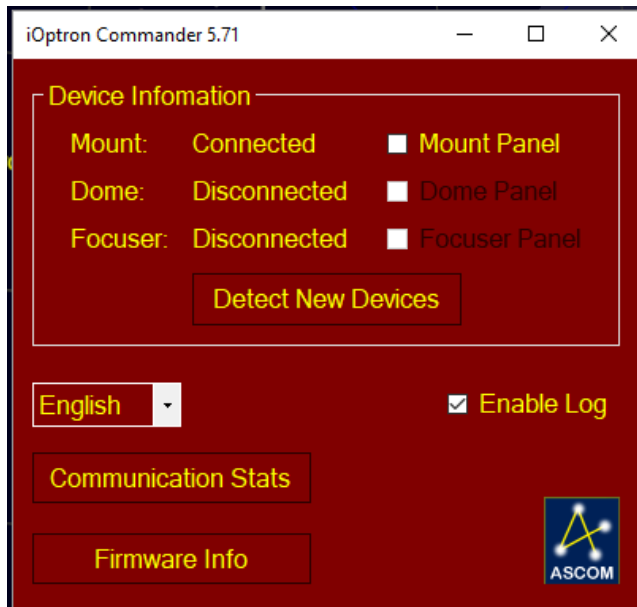
Connect the CEM40 mount to a computer using a USB cable. Download FTDI USB to RS232 VCP driver from internet (<https://www.ftdichip.com/Drivers/VCP.htm>), if your computer does not have one installed.



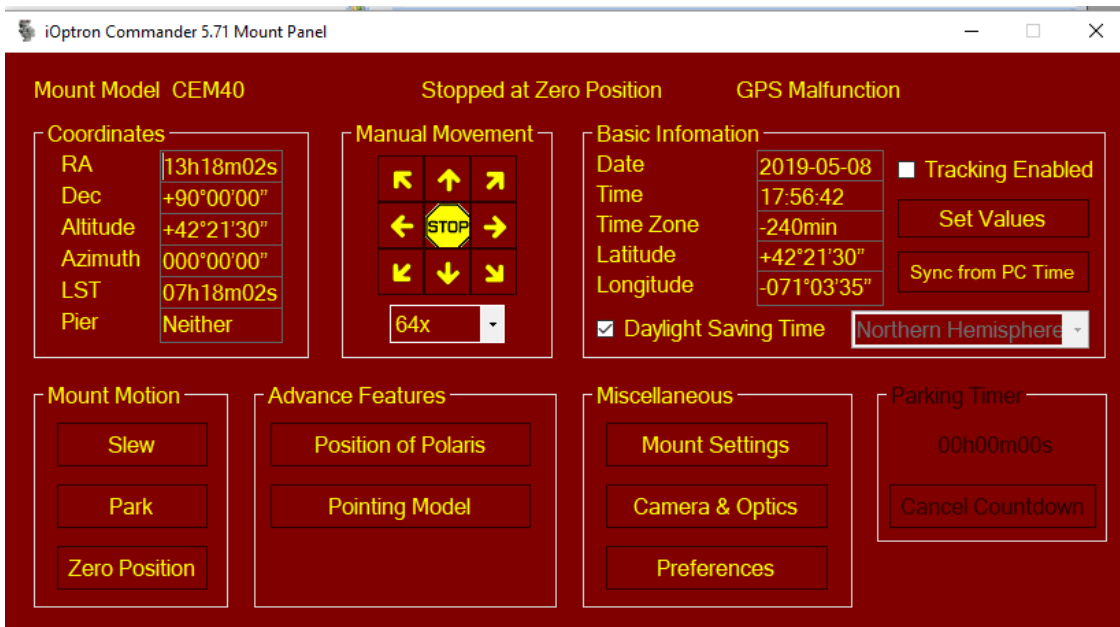
Click on iOptron Commander. An iOptron Commander Connection Setting window will open:



Select “**RS-232/USB Port**” with “**Auto Detection**” (or you can choose a port with the pull down button). Click OK. A device selection window will show.



Check Mount Panel to bring up the **iOptron Commander Mount Panel**.



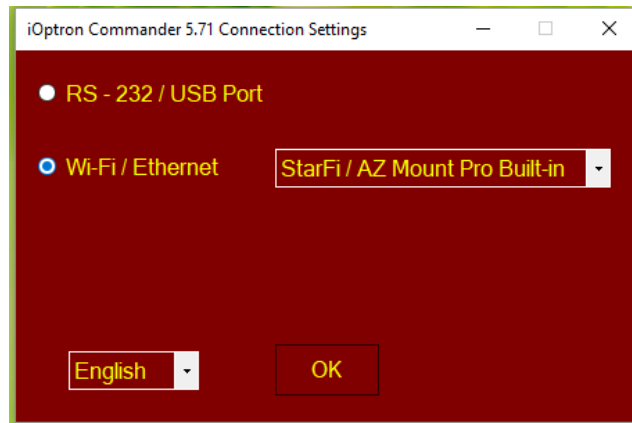
Now you can control the mount via iOptron Commander, or connect your favorite planetarium software and select **"ASCOM.iOptron.Telescope"** for software configuration.

1.2. Connect via Wi-Fi

The mount Wi-Fi connection is via an optional iStarFi adapter (#7434). Open the Wi-Fi connection panel on your device, Find a Wi-Fi SSID called "iStarFi_XXXXXX" and connect it.



Click on iOptron Commander



Select "**Wi-Fi/Ethernet**" and choose "**StarFi/AZ Mount Pro Built-in**" from pull down menu. Click OK will bring up the device selection window.

For a Mac OS, it depends on if the planetarium software has the iOptron CEM drive embedded.