

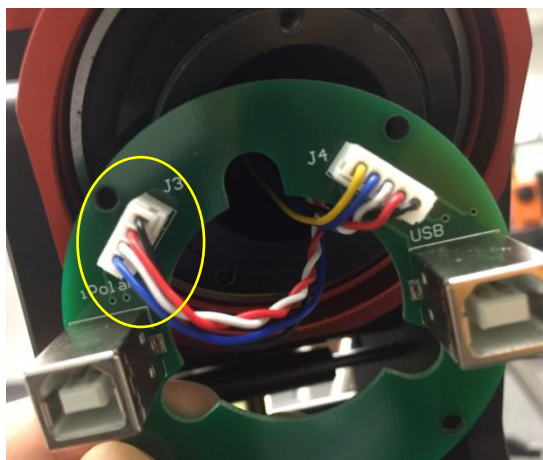
Optical Polar Scope Installation on a GEM45 Mount

Tool Needed: Metric Allan Wrench

1. Remove GEM45 cable management system (CMS) cover by unscrewing four screws.



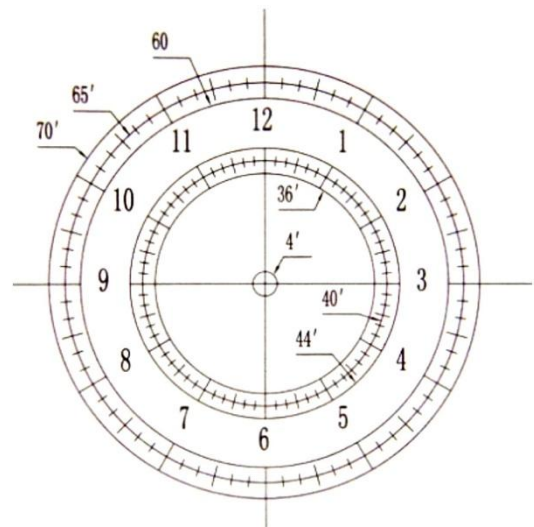
2. Separate the CMS board from the cover by removing 4 screws. Unplug iPolar wire from the board. Then replace the board.



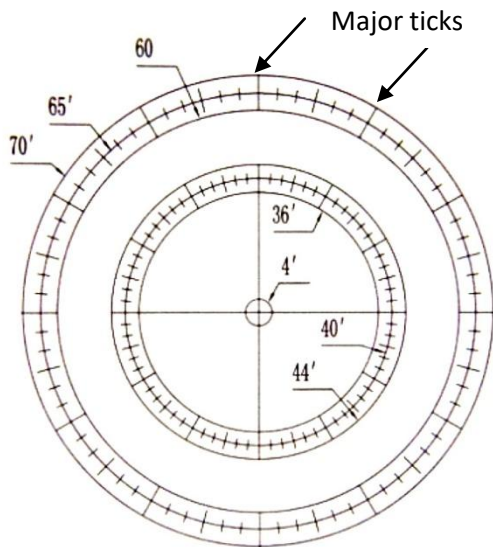
3. Remove polar scope front cover. Release two locking screws and pull out the iPolar with adapter from the mount RA axle.



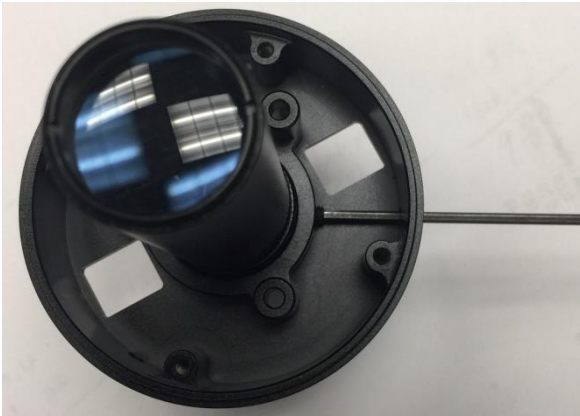
4. Insert optical polar scope into CMS cover, with 12 o'clock mark, or one of the major ticks if there is no number mark, facing upward. Lock the polar scope by tightening the locking screws. Do not over tighten it.



With clock number, 12 facing upward



No clock number, any one major tick facing upwards



When is the securing screw



7. Connect the LED cable between the LED and DC 12V output from the DEC saddle.



8. The polar scope LED brightness can't be adjusted. You may put a piece of semi-transparent paper in front of the LED if it is too bright.

5. Put the CMS board back and secure the screws. Insert the CMS cover with optical polar scope back into the RA axle and secure it.
6. Thread GEM45 polar scope LED onto the polar scope.