



# **iOptron Electronic Automatic Focuser iEAF (# 8453)**

## **Instruction Manual**

May 2023, Version 1.1

iOptron reserves the rights to revise this instruction without notice. Actual color/contents/design may differ from those described in this instruction.

The iOptron #8453 Electronic Automatic Focuser (iEAF) is a Standalone Focuser designed for both Crayford and Rack-and-Pinion focusers. It is powered by a 5V USB port. The focuser is ASCOM compatible and will work with most planetarium and imaging software. It also can be adjusted manually by pressing a button on the focuser.

**Features:**

- Whisper quiet operation
- Powerful stepper motor
- Zero backlash
- Built-in temperature sensor
- USB connection to a computer
- ASCOM compatible
- Manual adjustment
- Position memorizing during power off
- Compatible to most focuser with proper mounting bracket/adapter

**Package includes:**

- 1X iEAF
- 1X Mounting Plate
- 4X Flexible Adapter, for a focuser with a 4mm, 5mm, 6mm or 7mm shaft. Optional 8mm adapter is also available (#8453-8mm)
- 3X Allen wrench (2,3,4mm)
- USB 2.0 cable for focuser control and power
- 2X M5X10mm socket head screw and washer
- 2X M4X8mm socket head screw and washer



**Installation:**

Shown here is a refractor with a dual speed focuser as an example.

1. Remove the coarse tuning knobs. Check the focuser shaft diameter. And install a proper flexible adapter.



Current, the adapter supports a shaft with a diameter 5, 6, 7 or 8mm. 4mm adapter is optional.

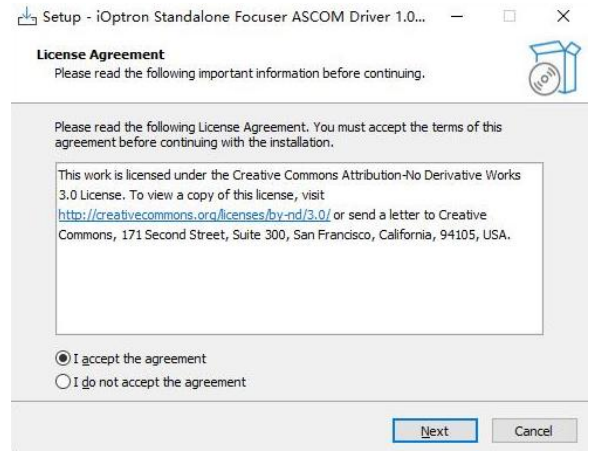
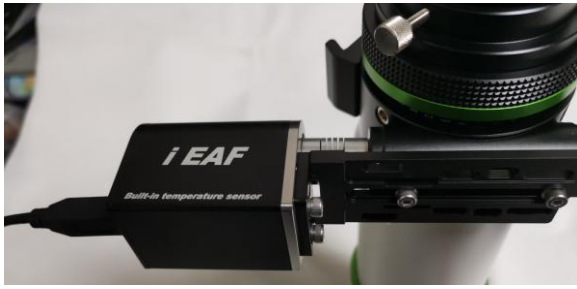
2. Attach iEAF Mounting Plate to focuser base.



3. Slide iEAF motor axle into the other end of the Flexible Adapter. Secure the motor onto the Mounting Plate. Tighten two set screws on the Flexible Adapter.



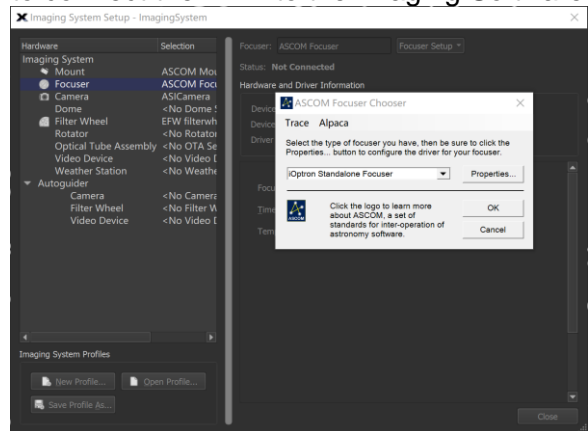
4. Plug USB cable into the USB port on the iEAF. Connect the other end to a PC for computer control via ASCOM, or plug into a 5V USB charger/power tank to power the iEAF for manual adjusting.



5. For manual adjustment, press the ◀ or ▶ button on the iEAF.



7. Choose "iOptron Standalone Focuser" from Image Software ASCOM Focuser setup menu to connect the iEAF to the Imaging Software.



6. For ASCOM control, download and install the iEAF ASCOM Driver Installer from iEAF product page.

**Specification:**

Focuser	Standalone electronic automatic focuser
Driving train	Stepper motor
Communication	USB2.0
Maximum payload	5 kg
Temperature sensor	Yes (built-in)
Control	ASCOM compatible or Manually
Focuser speed	3 rpm
Power	5V DC (via USB port)
Dimensions	51 X 61 X41mm
Weight	254g (focuser only)
Warranty	One year limited