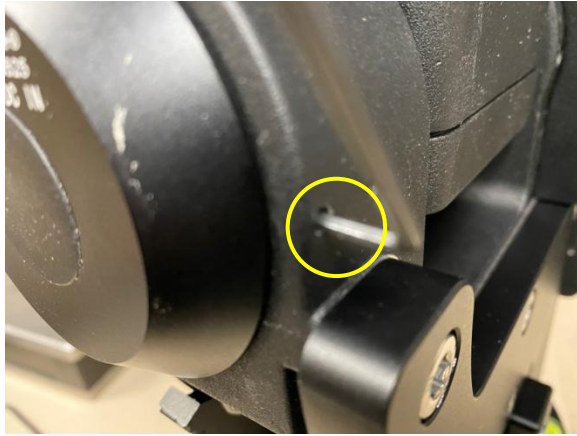


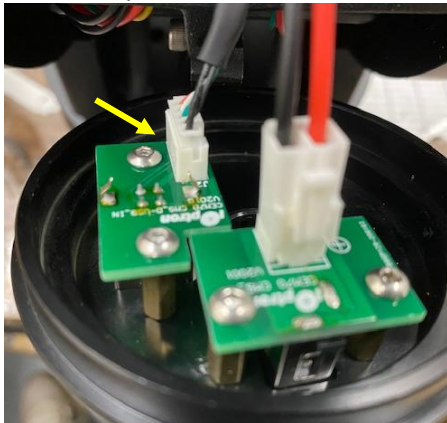
CEM70 USB 2.0 Connection Check

Tool needed: a set of metric Allen wrench

1. Release two small set screws on the side of the RA axle rear cover.



2. Pull the RA axle cover open to expose the USB plug. Check the USB wires and make sure it is plugged in firmly.



3. To check iPolar connection, remove the iPolar cap, loosen two setting screws.



4. Pull out the iPolar. Unplug the cable. Check the plug. Gently pull the cable to check if cable is loose somewhere.



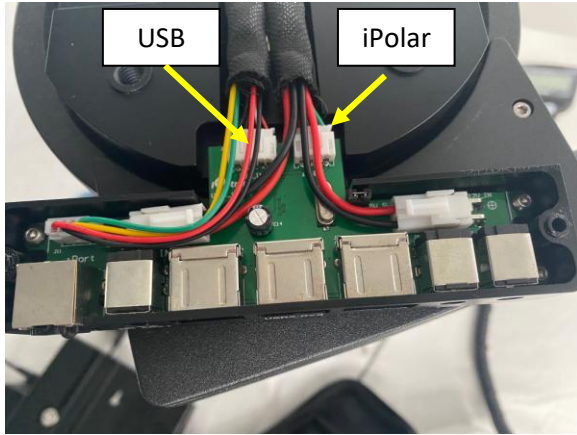
5. Rotate the dovetail saddle to the side. Release two screws that hold the USB box to the dovetail saddle.



6. Remove 4 screws that hold the dovetail saddle onto the Dec axle.



7. Lift dovetail saddle to expose the USB hub with cables. Check the USB cable and the iPolar plugs.



If you connect the mount to a PC via the USB port on the RA axle, you should see iPolar under Camera of PC Device Manager. If a FTDI VCP drive is installed, you should also see an assigned COM port under the Port of the Device Manager.