

# SkyHunter Firmware Upgrade

The firmware of SkyHunter mount is customer upgradable. The upgrading process is only supported by Windows. Please check iOptron's website, [www.iOptron.com](http://www.iOptron.com), under **SkyHunter Product Page** for the most up to date firmware.

The firmware upgrade will be done via the MiniUSB port on the mount. If you want to use a 8410 hand controller for the mount, make sure that the HC has a proper version firmware installed. **Firmware upgrade of an 8410 HC is also via mount miniUSB port.** Plug the HC to the mount when you upgrade the hand controller firmware.

To upgrade the firmware, you need some or all of the following software/hardware, depends on the upgrading you are performing:

- iOptron Upgrade Utility Program (*Version 3.0 or later*);
- Mount firmware upgrade package;
- Prolific PL23XX VCP (Virtual COM Port) driver if this is the first time connecting the mount to a computer.

## Step 1. Download files

Go to SkyHunter product page. Download PL23XX VCP driver, iOptron Upgrade Utility and kyHunter firmware package. Save them on your computer desktop or designated folder.

## Step 2. Install PL23XX VCP driver

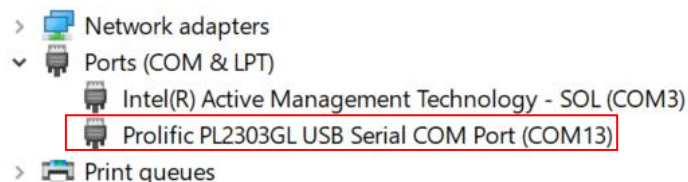
If this is the first time you connect the mount to a computer, please run PL23XX VCP installer.

## Step 3. Find the COM port number

Plug MiniUSB end of a MiniUSB cable into the USB port on the mount as shown below. Plug the USB A plug into any available USB port of the computer. Turn the mount power on.



Click on Windows Device Manager to find the assigned COM port for the USB connection. Here the port # is COM13.

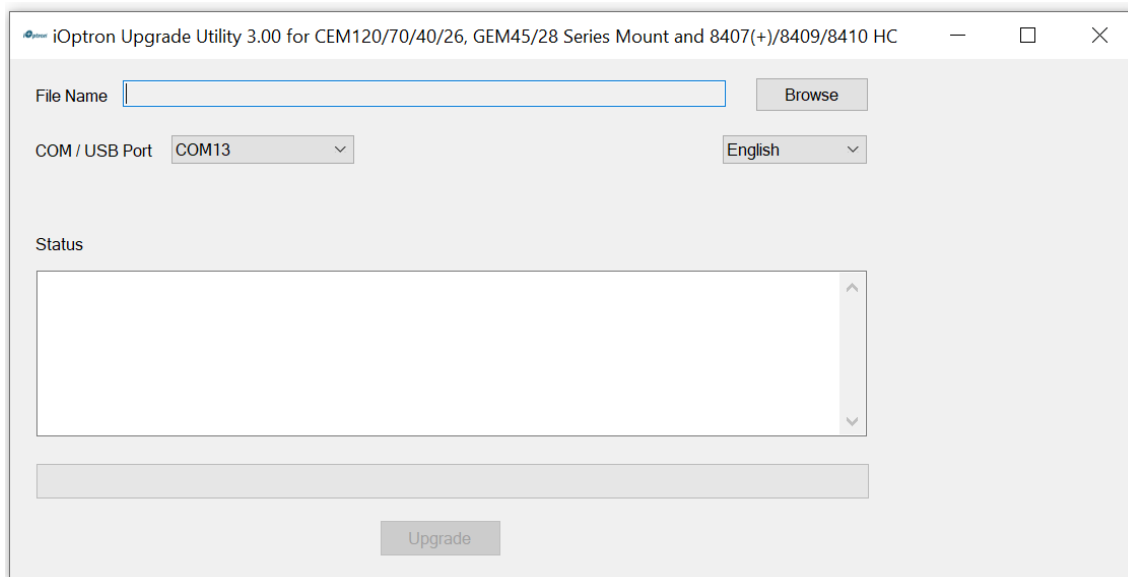


## Step 4 Upgrade firmware

(1) Locate downloaded software and click on **iOptronUpgradeUtility.exe**.

Name	Date modified
iOptron Upgrade Utility V3.exe	4/22/2022 9:22 PM
SkyHunter_FW20220305.bin	4/22/2022 9:22 PM

This will bring up the upgrade window:

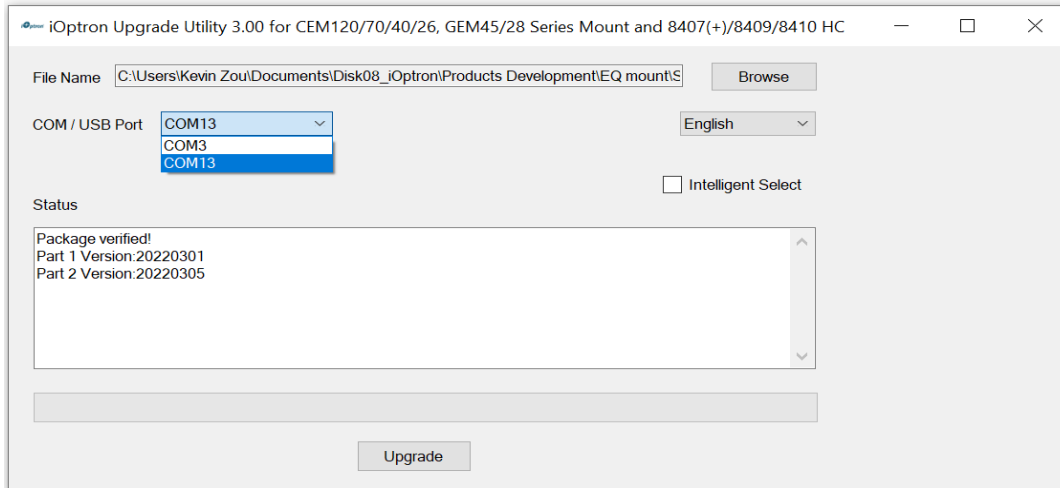


(2) Click on **Browse** in iOptron Upgrade Utility window. Select the mount firmware package, such as SkyHunter\_FW20220305.bin, and click **Open**;

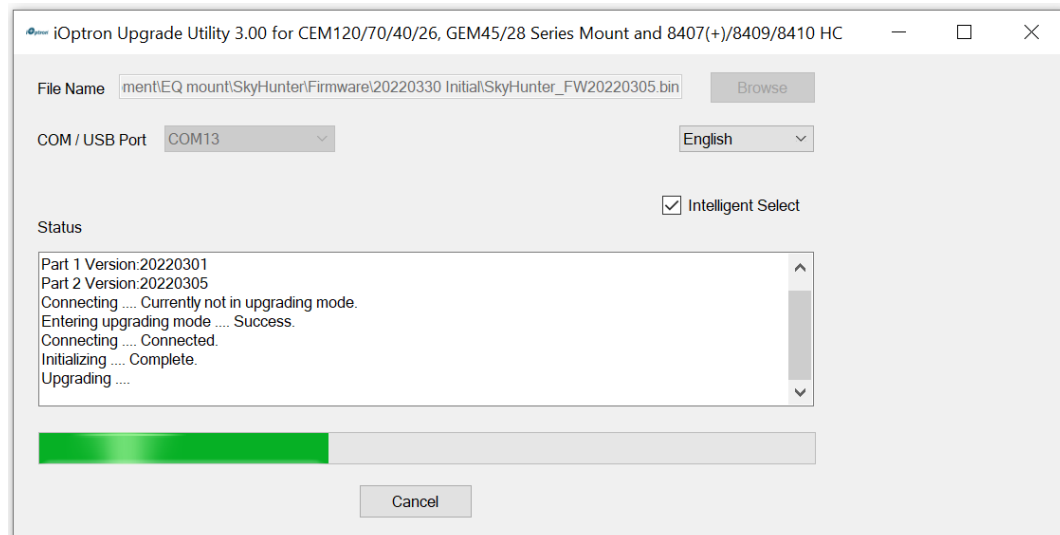
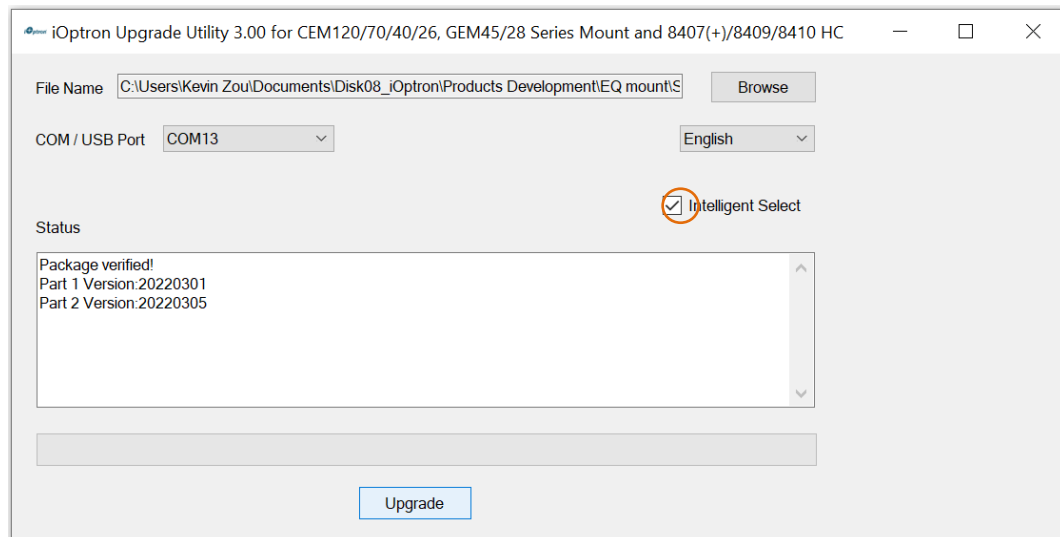
Name	Date modified
SkyHunter_FW20220305.bin	4/22/2022 9:22 PM

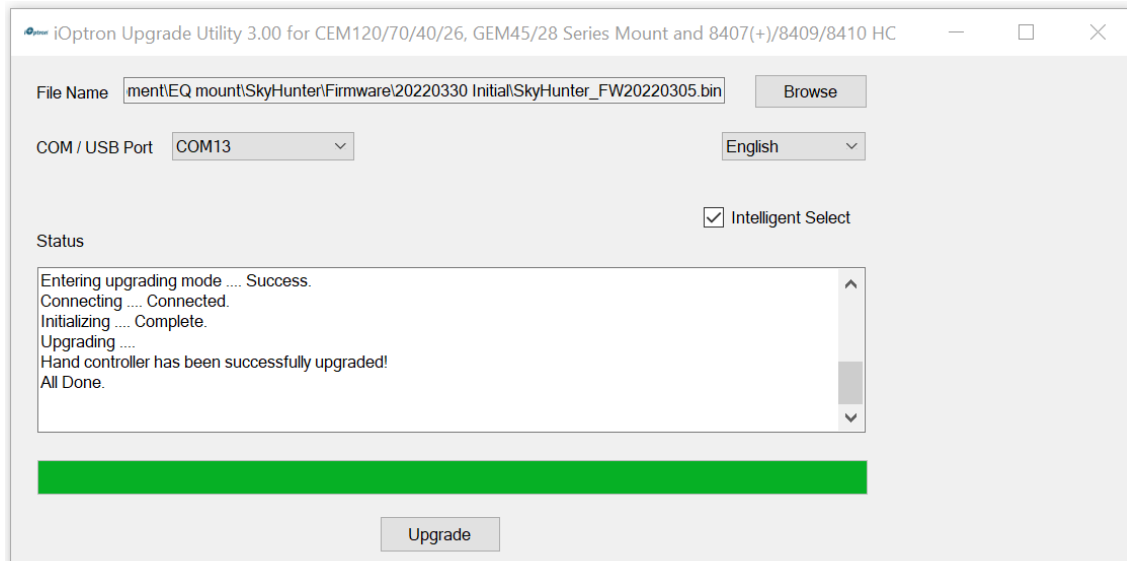
Type: BIN File  
Size: 253 KB  
Date modified: 4/22/2022 9:22 PM

(1) The **FileType** and **Version** will be verified and displayed. Select the COM13 from **COM/USB Port** pull down menu.



- (3) Check the “**Intelligent Select**” and click on **Upgrade** button. The software will starting upgrade if any or all firmware needs be upgraded.





- (4) Power cycling the mount. Check your firmware version after the firmware upgrade is finished via your Commander or hand controller.
- (5) Exit the **Upgrade Utility** program.

#### **Common errors during firmware upgrade:**

- (1) COM port cannot be opened:
  - Wrong COM port is selected;
  - A mount is not connected;
  - Cable is not plugged in firmly;
  - PL23XX VCP driver is not installed
- (2) Connection failed:
  - Mount power is not turned on;
  - Cable is not plugged in firmly;
  - Malfunctioned control board;
  - Wrong firmware selected.
- (3) Upgrade stopped in the middle or failed:
  - Cable is not plugged in firmly;
  - Cable is moved during process.

Contact [support@ioptron.com](mailto:support@ioptron.com) for technical support.