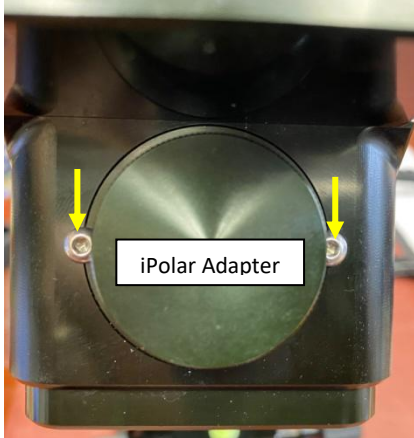


iPolar Installation –HEM Mount (#3339A-HEM)

Tool needed: a set of metric hex key wrench

1. Loosen two mounting screws and remove the iPolar adapter from the mount.



2. Slightly release two iPolar locking screws so the iPolar can slide in, with optical lens facing the cover.



3. Turn the iPolar so the USB socket is parallel to the two adapter mounting screw slots.



4. Tighten two iPolar setting screws. Do not over tighten them, or the lens tube may be damaged.



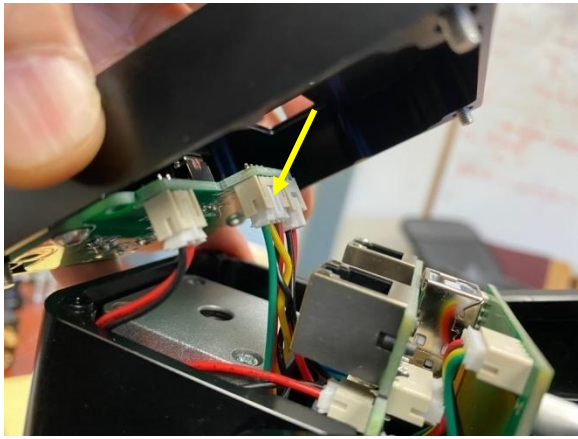
5. Remove mount bottom cover



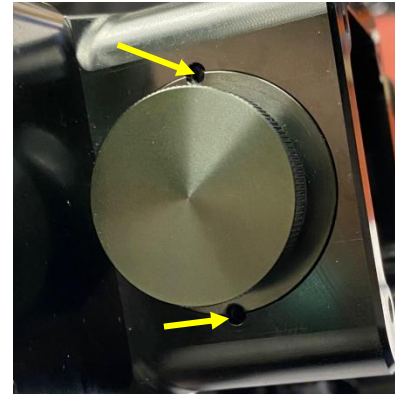
6. Remove four socket screws that hold the control board cover.



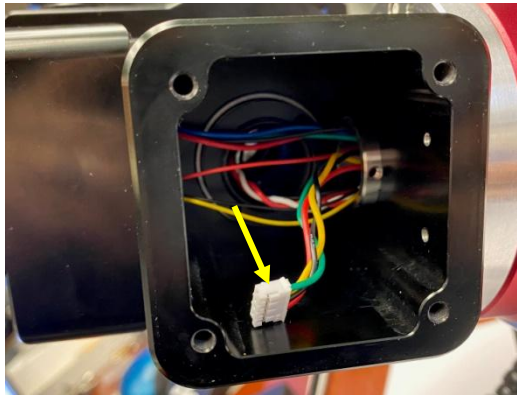
7. Thread the iPolar cable to the front opening and plug one end into the iPolar port on the main board. Closed the main board cover and secure the screws.



9. Align the ipolar adapter to the threaded holes on the RA axis and secure it.



10. Put the bottom cover on.



8. Insert iPolar with the adapter back into the mount. Plug the iPolar cable into the iPolar.

