

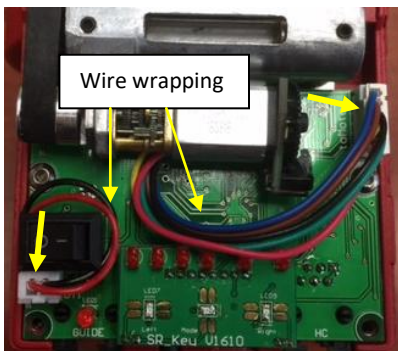
iPolar Installation –SkyGuider Pro (#3339R-SGP)

Tool needed: a set of metric hex key wrench

1. Loosen two screws at the front of the mount and two others on the top of a SkyGuider Pro main board cover and remove the black cover.



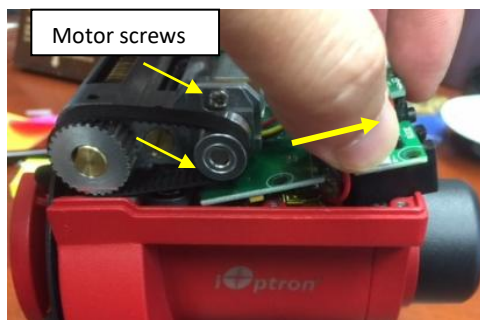
2. Unplug the 6-wire motor driver cable and DC power cable. Remember how wires wrapped.



3. Remove two mounting screws.



4. Gently pull the circuit board with sockets end up and slide the circuit board out. If the board is stuck by the motor, loosen **two** Phillips screws hold the motor.



5. Unscrew and remove the polar scope LED board and disconnect wire harness from the main board.



6. Remove polar scope cover and base.



7. Rotate the RA axis to find **TWO** set screws 90 degree apart next to the LED board, which are used to secure the polar scope in place. Use a 1.5mm hex key to release the set screws.



8. Pull the polar scope out of the RA axis.



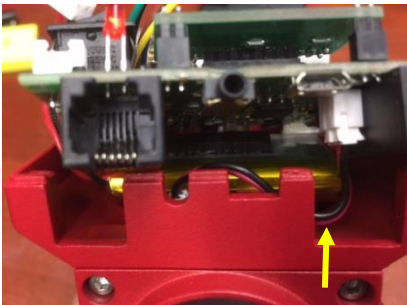
9. Insert the iPolar into the RA axis. Rotate it to align the USB port to the DEC bracket. Lock the set screw gently to secure the iPolar.



10. Replace the Polar Scope base plate with a new one with larger opening, if your SkyGudier Pro is an earlier version.



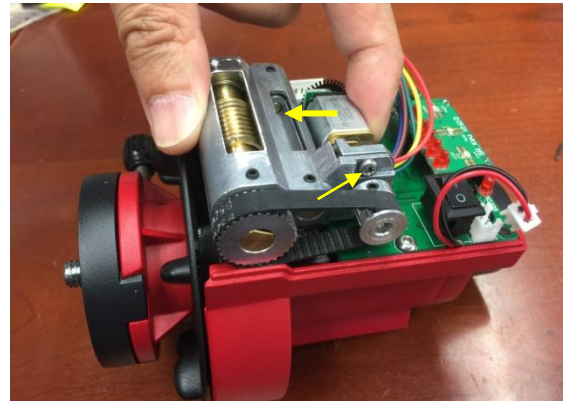
11. Sliding the front end of the control board in. Make sure the LED cable underneath is not jammed.



12. Gently push the board in when the power cable goes through the small cut on the board.



13. If you release the motor to gain more space while remove the board, tighten motor locking screws while push the motor against worm assembly to tension the belt properly.



14. When securing the board with two screws, make sure that the battery and wires underneath are properly seated. Fully tighten the screws.



15. Plug in the battery wire and motor cable. Refer to step 2 to wrap the wire properly. Put the cover and screws on.

16. Follow iPolar Operation Manual to perform the polar alignment. **You may slightly release the RA clutch disk, or use quick slew button (more precise), to rotating the SkyGuider Pro RA axis during camera center calibration.**